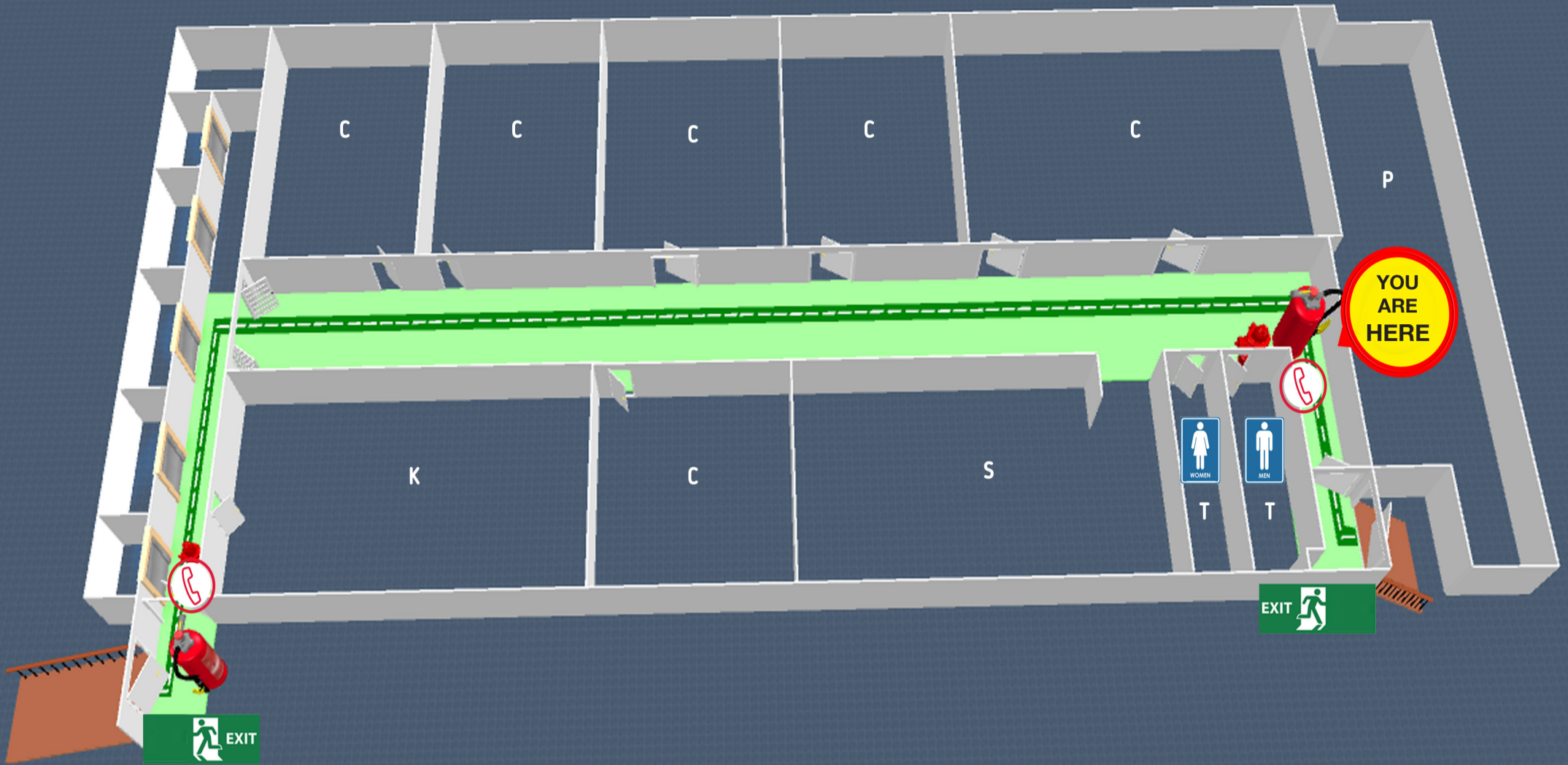


# EVACUATION DIAGRAM

Level 10, 123 Queen Street Melbourne




					
LIFT	TOILET	EXIT	YOUR LOCATION	EMERGENCY PHONE	FIRE EXTINGUISHER

## EMERGENCY RESPONSE PROCEDURES

 **ON DISCOVERING A FIRE OR OTHER EMERGENCY**

- Contact authorized designated staff member immediately.
- Press Break Glass Alarm next to "RED WIP Phones".
- Attempt to extinguish the fire **ONLY IF SAFE TO DO SO**.

 **EVACUATION PROCEDURE**

- Act on instructions from the PA system or floor wardens (identified by Yellow hard hats).
- Once given the order to evacuate please evacuate the building by the shortest, practical and safest route.
- **DO NOT** use lifts
- Proceed to the designated assembly area and remain there until the all-clear is given by the chief warden or Fire Brigade only.

**A** **EMERGENCY ASSEMBLY AREA**

- Corner, Little Collins Street & Bank Place

<b>C</b>	CLASSROOM
<b>K</b>	KARSTENS KITCHEN
<b>S</b>	STUDENT LOUNGE
<b>P</b>	PLANT ROOM
<b>T</b>	TOILET

